

Mamiya®

MAMIYA RZ PERSPECTIVE &
IMAGE CONTROL SYSTEM



“Control, impact
and the speed of
medium format.”

On the Cover:

Assignment: Martini Glasses

Effect: Selective Focus and Unusual Perspective

Data: 75mm f/4.5 SB lens 1/60 f/4.5

High camera angle, selective focus and window light enhance the dreamy quality of this natural light composition.

The 75mm wide angle lens was used at maximum aperture, in combination with a backward or reversed tilt movement of the RZ Tilt/Shift Adapter. Vertical Rise was adjusted to attain the unique camera angle and perspective.

Assignment: Shaving Brush and Razor – Common Objects

Effect: Selective Focus

Data: 75mm f/4.5 SB lens 1/60 f/4.5

The simplicity and basic form of everyday items is expressed with mood and elegance by using the selective focus technique.

The 75mm wide angle lens was used at maximum aperture, in combination with a backward or reversed tilt movement of the RZ Tilt/Shift Adapter.

THE UNIQUE MAMIYA RZ TILT/SHIFT ADAPTER

expands the image control capabilities of the Mamiya RZ system. Previously, similar effects could only be effectively done with specialized, large view cameras. Now you can have the advantages of medium format quality and convenience, legendary Mamiya sharpness plus unique perspective and focus control. The Tilt/Shift Adapter maintains the ease-of-use, versatility, SLR viewing, and electronic functions of the RZ system, while adding exciting new creative control. It expands the RZ system and allows full use of all RZ film magazines, digital backs, and optional AE Finder and motor winder functions. In addition to SLR viewing, a precision Ground Glass Back Adapter is also available to check focus, depth-of-field, composition and perspective effects on the film plane. In the case of using extreme lens movements, all adjustments, and any image vignetting can be observed on the ground glass.



*Mamiya RZ67 with
Tilt/Shift Adapter and
75mm SB Lens attached.*

Paul Aresu on the RZ Perspective and Image Control System

"I constantly look for a new way to present an image. An unusual view, a dramatic perspective. The Tilt/Shift system gives me the kind of view camera control I need with the speed of medium format."

The conceptual abilities of Paul Aresu have earned him awards and gallery exhibitions as well as respect and praise from his peers.

His expertise lies in his use of light and color. His use of focus, exposure, color gels and lighting reflects a variety of techniques, manipulating the camera to create lasting images. Clients include IBM, Canon, Mamiya, Kodak, Pepsi, Coca Cola, AT&T, Sony, Godiva, Moet, Casio, Dupont, Avon, M&M/Mars, Sears, Reebok, Footlocker, Hershey, Nike, Hanes, Lucky Strike and more.

FUNCTION

The Tilt/Shift Adapter features two precision micro-fine geared controls that adjust the lens position in parallel and pivoted relation to the film back. Each control features a scale and independent lock knob.

Shifting the lens up or down maintains parallel relation of the lens to the film plane, while accomplishing perspective control.

Tilting of the lens up or down allows complete control of focus plane, to increase depth-of-field or minimize it for selective focus effects.

Coupled with the bellows focusing of the RZ, this Adapter effectively gives greater image control for table top, product, and close-up photography with many RZ lenses. In addition to up and down shift and tilt, the complete RZ camera with Adapter may be tilted on its side to make use of the movement controls in a horizontal plane for architectural and table top applications.

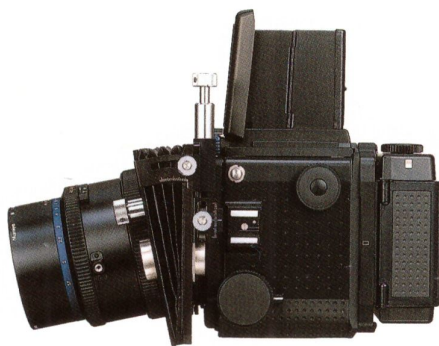
The unique revolving back of the RZ offers complete freedom of vertical or horizontal composition.



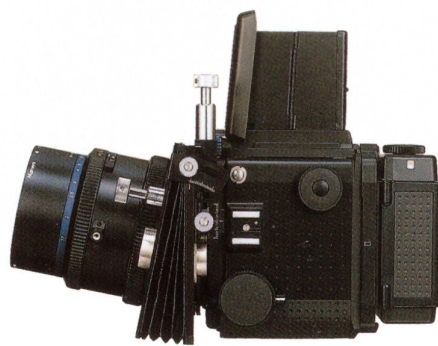
Tilt/Shift Adapter



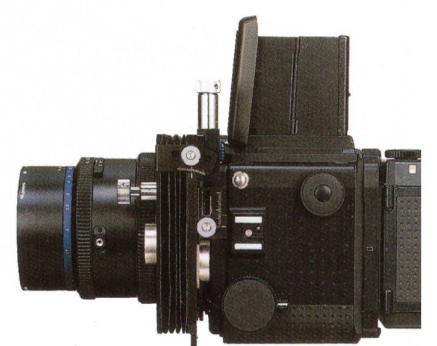
Ground Glass Adapter



Tilt Down



Tilt Up



Vertical Shift

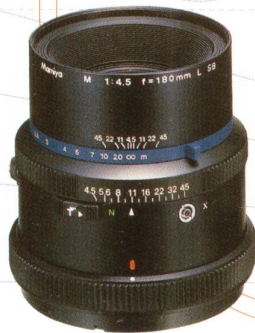
LENSES



75mm SB Lens



SB Auto Spacer



180mm SB Lens

Mamiya's legendary RZ lens system includes two specialized Short Barrel (SB) lenses which allow continuous focusing from infinity to close-up when attached to the Tilt/Shift Adapter. The 75mm SB and 180mm SB lenses are optically identical to the RZ series 75mm f/4.5 Shift and the 180mm f/4.5 W-N. They cover a wide image area and allow full use of the Adapter's capabilities.

The SB lenses may also be used on the Mamiya RZ camera without the Tilt/Shift Adapter and when used with the 27.2mm auto spacer, will focus continuously from close-up to infinity.

Both the 75mm and 180mm SB lenses are state-of-the-art designs capable of rendering exceptional clarity and contrast. Each uses Mamiya's own formulation of high density/low dispersion glass as well as proprietary lens multi coating.

When using non-SB lenses with the Tilt/Shift Adapter, closer than normal focusing ranges are possible.

Assignment: Architectural Interior
Effect: Maintain Proper Perspective
Data: 75mm f/4.5 SB lens 1sec f/16

Typical challenges in interior architectural photography include increasing depth-of-field, keeping lines parallel, and shapes accurate. Tilt and Vertical Shift were both used to render this warm and cozy interior.

The 75mm and 180mm Short Barrel (SB) lenses allow a complete range of focus from close-up to infinity for all architectural and landscape applications.



Vertical Tilt/Shift Down



Assignment: Cosmetics Ad

Effect: Selective Focus and In-Camera Double Exposure

Data: 75mm f/4.5 SB lens 1/60 f/5.6 and 180mm f/4.5 SB lens with 27.2mm Spacer 1/30 f/5.6

A unique product shot achieved by selective focus, vertical shift control, and in-camera, double exposure. Two Mamiya RZ67 PRO II cameras were set-up for separate shots. The camera back was switched from one camera to another. With a single switch on the camera, multiple exposure was possible, with precise film registration.

Two different focal length lenses, wide angle and telephoto, were used to achieve differing perspectives of the same product. The 27.2mm Spacer allowed closer focusing with the 180mm lens. The finely geared vertical shift movement of the RZ Tilt/Shift Adapter was used to carefully adjust composition. Backward or reversed tilt created the selective focus effect.

APPLICATIONS

For advertising photography, the Tilt/Shift Adapter makes special focus and perspective effects possible, adding a new dimension to style. With the 75mm and 180mm RZ Short Barrel Lenses, applications include interior and exterior architecture.

The tilt capabilities of the Adapter allow selective focus ideal for fashion, beauty and portraiture, with a variety of lenses, depending upon the close-up requirements. Typically, lenses from 140mm and up are recommended for tight close-ups. For full range focusing, the Short Barrel 75mm is ideal for group or full length shots, or table top fashion items. The 180mm allows full range focusing, excellent for product or headshots.

In combination with a variety of lenses, the Adapter gives unique perspective and focus control with a variety of lenses for table top product work.

With Short Barrel 75mm and 180mm lenses, the Adapter can tackle many industrial assignments where perspective and depth-of-field are critical.



Assignment: Fashion Shoot

Effect: Selective Focus and Unusual Perspective

Data: 75mm f/4.5 SB lens 1/60 f/4.5 and 180mm f/4.5 SB lens 1/30 f/5.6

One of the most elegant and distinctive effects in the world of fashion photography, when used creatively, selective focus can add punch and glamour to the most simple composition. With selective focus, the photographer can concentrate visual attention of any feature of the model, clothing, or accessories.

Two different focal length lenses, wide angle and telephoto, were used to achieve differing perspectives during the shoot. Backward or reversed tilt can be pre-selected for more spontaneous shooting, or finely adjusted for precise control of the plane of focus.



For landscape and nature photography, depth-of-field can be greatly increased for dramatic scenes, or close-ups of flora and fauna enhanced when using the Adapter with Short Barrel 75mm or 180mm lenses.

With a variety of lenses, the Adapter opens a new world of possibilities for close-up and table top photography where perspective and depth-of-field are challenges. Because the Adapter increases the lens to body distance by 27.2mm, it effectively acts as an extension tube, increasing minimum focus distance.

In combination with extension tubes, it will allow depth-of-field control even in extreme macro and copy work situations by selectively controlling plane of focus.

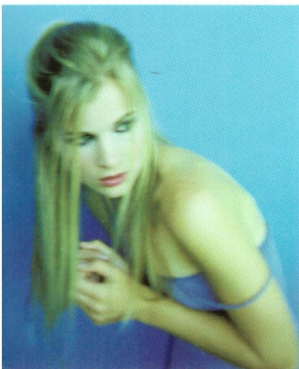
Assignment: Wrist Watch Ad

Effect: Maximum Depth-of-Field

Data: 75mm f/4.5 SB lens 1/125 f/11

What could have been an ordinary product shot of wrist watches is transformed into a dramatic photograph with attention getting detail and composition created by dramatic perspective and complete definition from near to far.

The 75mm wide angle focal length lens was employed in combination with the full tilt and vertical shift movements of the RZ Tilt/Shift Adapter.

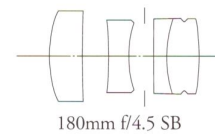
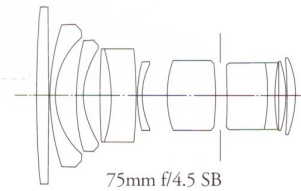


TILT/SHIFT ADAPTER DATA:

Design	Micro fine geared shift and tilt mechanism Fully coupled RZ electronic function Fully coupled RZ/RB shutter cocking
Tilt	+/- 12° with reference scale
Shift	+/- 10mm with reference scale
Increased Flange Focal Distance	27.2mm
Lenses	Accepts all RZ and RB lenses (recommended with lenses from 110mm and up) Accepts RZ Short Barrel lenses for infinity focus
Size	6.2" x 6.3" x 2" (158mm x 161mm x 50mm)
Weight	25oz (700g)
Accessories	RZ electronic release Extension Cord included
Optional Accessories	Ground Glass Focusing Adapter with grid and fresnel lens 27.2mm Auto Spacer

SB Lens Technical Data

Lens	75mm SB	180mm SB
Optical Construction	11 elements in 9 groups	4 elements in 3 groups
Angle of View 6x7 Format	62°	28°
Equivalent Focal Length to 35mm	36mm	87mm
Aperture Range	f/4.5 to f/32	f/4.5 to f/45
Filter Size	105mm	77mm
Dimensions (L xW)	5" x 4.25" (124.5 x 108mm)	3.5" x 3.75" (91.8 x 97.2mm)
Weight	2.9 lbs (1295g)	1.8 lbs (808g)



Lens Focusing Range With Tilt/Shift Adapter

Lens	Minimum to Film Plane	Minimum to Lens	Maximum to Film Plane	Maximum to Lens
M75mm 4.5 SB	15.6" (397mm)	2.7" (68mm)	infinity ∞	infinity ∞
M180mm f/4.5 SB	34" (868mm)	22.5" (572mm)	infinity ∞	infinity ∞
50mm f/4.5 W	11.2" (284mm)	0.9" (24mm)	11.7" (298mm)	3.3" (84mm)
50mm f/4.5 ULD	11.6" (295mm)	1" (25mm)	12.2" (311mm)	3.4" (87mm)
65mm f/4 L-A	13.4" (340mm)	2" (50mm)	15.6" (395mm)	6" (151mm)
75mm f/4.5 Shift	15.6" (397mm)	2.7" (68mm)	19.1" (485mm)	8" (202mm)
90mm f/3.5 W	15.4" (391mm)	5.2" (131mm)	21" (532mm)	12.5" (318mm)
110mm f/2.8 W	17.8" (453mm)	8.4" (214mm)	27.2" (691mm)	19.6" (498mm)
M140mm f/4.5 L-A	25" (624mm)	13.8" (350mm)	41" (1042mm)	32" (814mm)
150mm f/3.5 W	26" (661mm)	16" (401mm)	45" (1137mm)	36" (923mm)
180mm f/4.5 W	34" (868mm)	22.5" (572mm)	61.4" (1559mm)	51.5" (1308mm)
210mm f/4.5 APO	43.4" (1103mm)	32" (811mm)	81.8" (2077mm)	72.1" (1831mm)
250mm f/4.5 W	54.8" (1393mm)	42.9" (1090mm)	107.2" (2724mm)	97" (2466mm)
250mm f/4.5 APO	55" (1402mm)	42.5" (1080mm)	108" (2743mm)	97" (2466mm)
M180mm f/4 Soft	32.9" (836mm)	21.3" (540mm)	59" (1499mm)	49.2" (1250mm)