

Mamiya®

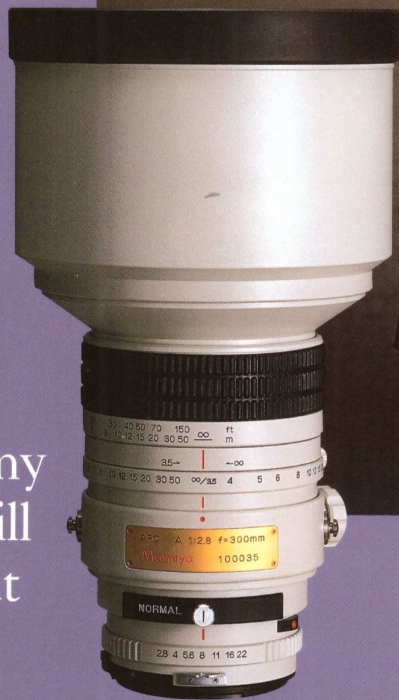
300mm f/2.8 APO for 645 Series





“I know my covers will stand-out when I use it.”

Richard Hume on the 300mm f/2.8 APO



“The control over subject and background is extraordinary. And I love the effects I get from it. Sometimes it is startling. Razor sharp, blown-out backgrounds, its just the way I see my models. It gives me a real feeling of control on location.”

The Mamiya 300mm f/2.8 APO

Truly a marvel of optical design, the Mamiya 300mm f/2.8 APO is the first high-speed APO tele of its kind for medium format cameras. Designed to meet the needs of photographers who appreciate high-speed telephotos in their 35mm work, the Mamiya 300mm f/2.8 APO adds a new dimension to medium format photography.

Optical performance at all apertures, including wide open, is exceptional making it suitable for a wide variety of applications including sports, fashion and beauty, portraiture, landscape and photojournalism.

For fashion, beauty and portrait photographers, the 300 f/2.8 APO gives a classic high-speed telephoto effect for creating images with flattering proportions and "blown-out" background, adding emphasis to the subject.

The built-in preset-focus locking ring allows speedy focusing between a preset near and far distance, ideal for sports and fashion shooters. This feature eliminates the need to rotate the focus collar through the entire range when a selective camera-to-subject distance is used.

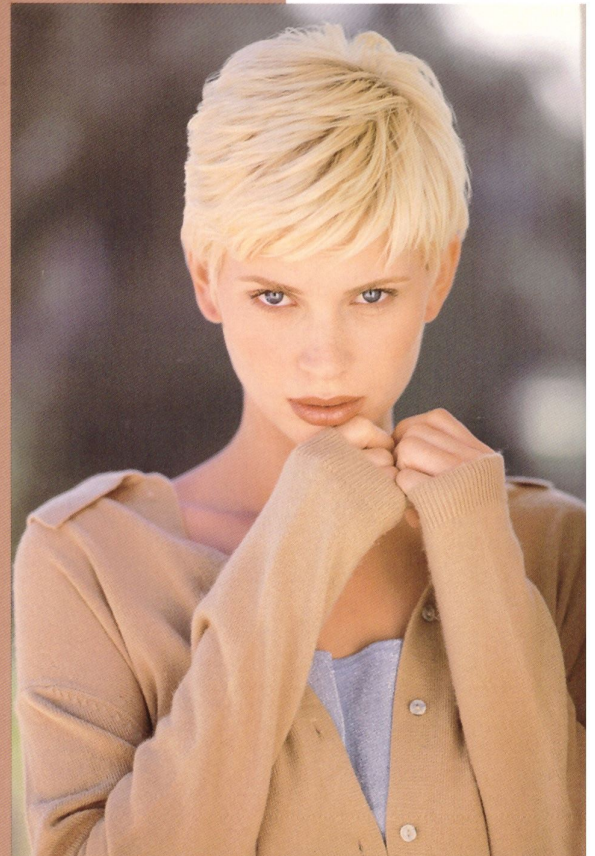
A built-in filter drawer adds convenience of using the provided set of small, drop-in filters and permits addition of custom-cut gelatin filters. They are directly in the light path, eliminating problems caused by adding large reflective surfaces at the front element.

Additionally, it features a rotating tripod collar, for ease-of-use on tripod or monopod, and special strap lugs on the collar for hand-held or monopod use.

To expand the possibilities of the 300mm f/2.8 APO, the 645 Series 2X Extender N-2 doubles the effective focal length to 600mm. The benefits of a relatively fast maximum aperture of f/5.6 are maintained in a very compact and lightweight long-telephoto. Total effective focal length in the 35mm format is approximately 372mm. This combination yields excellent results at all apertures. Ideal for economical expansion of applications including sports and wildlife shooters.

Richard Hume's work has adorned the covers of major magazines in the US, Europe and Australia. His fashion, beauty, advertising and editorial photos are striking examples of his beautiful lighting and creative style.

"I grew up on 35mm so I thought the switch to medium format would be traumatic. . . I love the bigger image. And . . . handling is what I'm used to



Standard of Excellence

Mamiya lenses are designed and built for today's foremost photographers who expect their equipment to provide both outstanding and distinctive results.

Engineers at Mamiya have developed rigorous performance criteria for each lens design. No detail is overlooked. No test is omitted. The goal is technical perfection... The result is a series of lenses which have set the new world-standard of performance. A perfect example is the 300mm f/2.8 APO.

It is a state-of-the-art APO telephoto design, using Mamiya's own formulation of high density/low dispersion glass. Each lens element is precisely polished and coated using Mamiya's proprietary multi-coating process to increase light transmission, dramatically reduce flare, ensure crisp, clean whites and vibrant, yet natural colors.

Mamiya apochromatic lenses have been developed to exploit the increasingly higher resolving power of today's advanced films and enhancing printing and digital technologies. The ultra-high performance of Mamiya APO design lenses are ahead of the technical innovations in both film and printing. The designs accomplish the highest level of optical performance possible in longer focal length and telephoto design lenses, where image quality is degraded from problematic axial and lateral chromatic aberrations.

Color balance of the 300mm f/2.8 APO has been perfectly matched to the entire series of 645 lenses, to assure identical color reproduction of all focal length lenses.

Mamiya engineers and inspectors test continuously as the lens is assembled to insure flawless quality. The result is a lens designed so carefully, built so meticulously, that it consistently renders extraordinary performance!

It is Mamiya's unique balance of extreme sharpness, brilliant contrast, accurate and consistent color fidelity and overall high performance that captures the imagination of contemporary photographers who choose Mamiya to express their personal visions.

Among today's community of world famous photographers, Mamiya lenses have established themselves as the new benchmark by which others are measured.

Accessories

Drop-in filter Set included: Clear/Normal, UV SL-39, SL1B/Skylight 1B, LB-A/type A warming color conversion, LB-B/Type B cooling color conversion, Gelatin filter holder. 2X Extender N-2 doubles focal length for an effective 600mm f/5.6 lens with superb image quality.

Mamiya Carbon Fiber Monopod

Helps stabilize camera and lens for tele-photography especially at slower speeds in hand held-existing light situations.

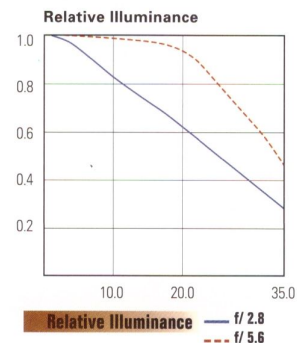
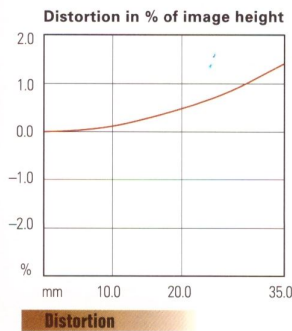
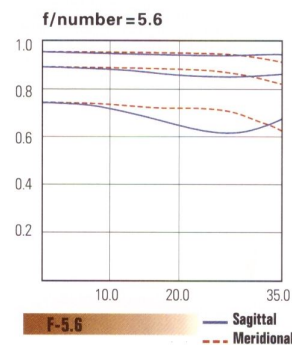
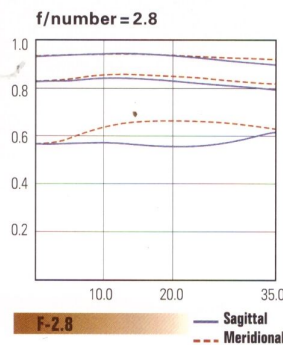
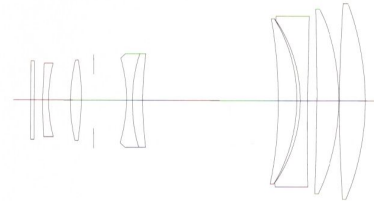
Specifications:

There are many measures of lens excellence. Some aspects are subjective, such as appearance and handling. Others are quantifiable, such as sharpness, contrast, and distortion.

Mamiya lenses have achieved a reputation of greatness and possess a unique balance of superb edge-to-edge sharpness, faithful color reproduction and evenness of illumination. The resulting

images captured on film are those which photographers hold in the highest regard.

The charts for the Mamiya 300mm f/2.8 APO are supplied for those photographers or optical specialists who wish to



CONSTRUCTION	9 ELEMENTS, 8 GROUPS
ANGLE OF VIEW 645 FORMAT	13°
EQUIVALENT FOCAL LENGTH TO 35MM	186MM
APERTURE RANGE	F/2.8 TO F/22
MINIMUM FOCUSING DISTANCE	11.48 FEET (3.5M)
MAXIMUM MAGNIFICATION RATIO	0.10X
MINIMUM AREA COVERED	17X23" (436.8X589.5MM)
FILTER SIZE	SPECIAL 43.5MM
DIMENSIONS	9.3X5.5" (237X139.5MM)
WEIGHT	6LB (2700G)